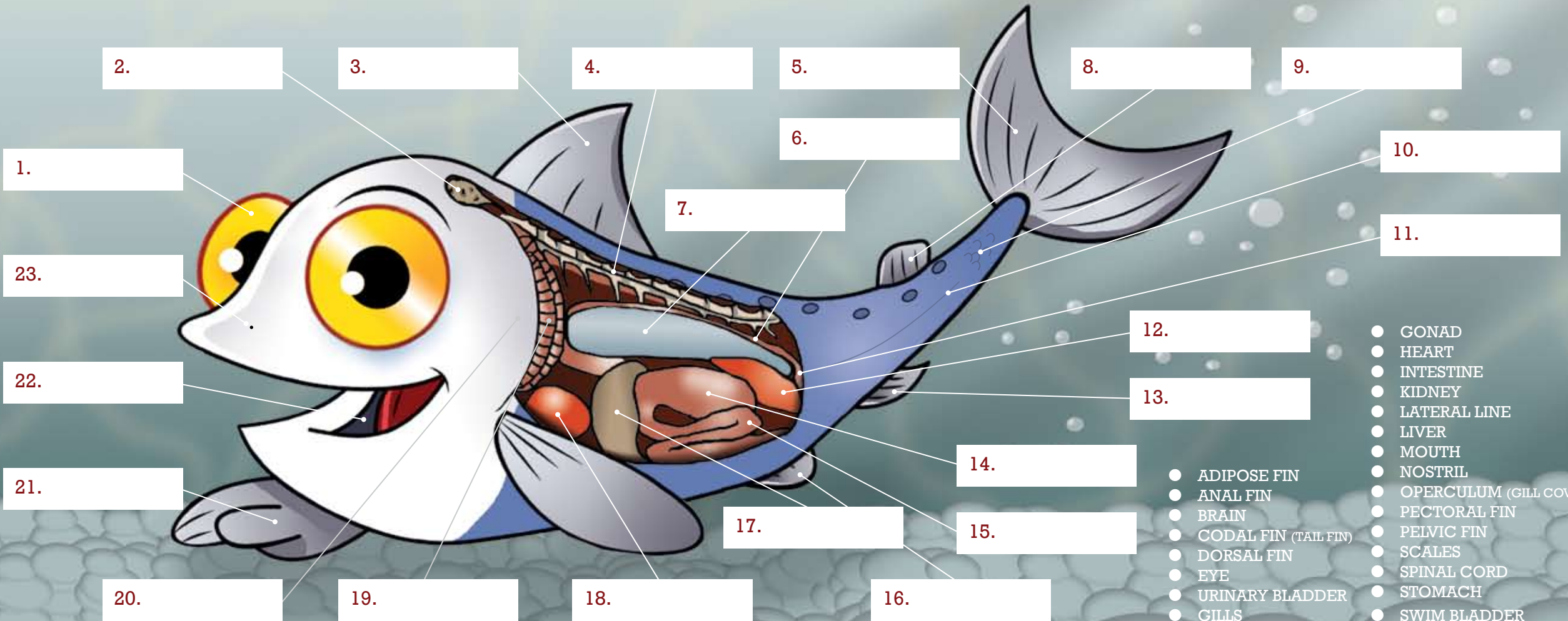


# Anatomy of Salmo the Salmonid



**FQSA**  
Fédération québécoise  
pour le saumon atlantique



- GONAD
- HEART
- INTESTINE
- KIDNEY
- LATERAL LINE
- LIVER
- MOUTH
- NOSTRIL
- OPERCULUM (GILL COVER)
- PECTORAL FIN
- PELVIC FIN
- SCALES
- SPINAL CORD
- STOMACH
- SWIM BLADDER
- ADIPOSE FIN
- ANAL FIN
- BRAIN
- CODAL FIN (TAIL FIN)
- DORSAL FIN
- EYE
- URINARY BLADDER
- GILLS

Thank you to our partners  
for the realization of this project:

